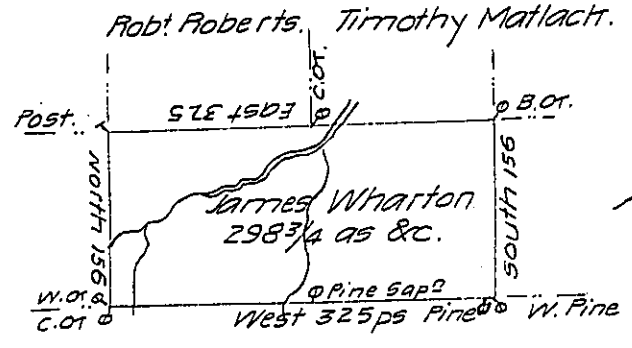


C-180-209

C-142-241

A64-56
Benjn Davis



Draft of a tract of land Called — Situate on the water obl obl
 Run that empties into the Easterly side of the N.E. Branch of Susqobl
 opposite Sheshequinunch joining land surveyed for Timothy Matlobl
 obl others in Luzerne (late Northumd) County Containing two huobl
eighty nine acres & allowance of Six P. Cent. for roads &c. Surveyobl
 obl James Wharton the 10th day of April 1786 in pursuance obliterated
 dated the 27th day of April 1775 and an order of the Honl Bd obliterated
 dated the 9th day of Feby 1784. by

Wm. Gray D. obl.

Daniel Brodhead Esqr.

Surv. Genl.

IN TESTIMONY that the above is a copy of the original remaining on file in
 the Department of Internal Affairs of Pennsylvania, made
 conformably to an Act of Assembly approved the 16th day of
 February, 1833, I have hereunto set my Hand and caused
 the Seal of said Department to be affixed at Harrisburg,
 this twenty-seventh day of JUNE 1907

Henry Howells

Secretary of Internal Affairs.